

## ➤ **HEINE Binocular Loupes and Headlights**

Perfect view for highest accuracy during all procedures.  
As individual as your daily work.

**EXPERIENCE THE DIFFERENCE**





## Experience HEINE® ML4 LED HeadLight

Perfect fit. Perfect view.  
During long procedures.

Specially designed for healthcare professionals who need a perfect view during long surgical operations or treatments. The headband offers multiple adjustment points and soft padding ensuring highest comfort and a firm fit.

**LED<sup>HQ</sup>**  
LED NOW IN HEINE QUALITY.



## TOPSELLER IN ALL SURGICAL SPECIALTIES

- **Choose your power source.** Wireless, headband-mounted (UNPLUGGED) or portable power pack (mPack) (see page 6).

- **Perfect fit.** Through multiple adjustment points.

- **Shadow free image.** Through a compact coaxial design.

- **Adjustable spot size.** e.g. 30 to 80 mm at 420 mm working distance – for an optimal field of view.

- **Unique HEINE LED<sup>HQ</sup>.** 65,000 Lux. Homogenous. True colour rendering.

- **i-View loupe mount.** For any angle of view. With flip-up function.





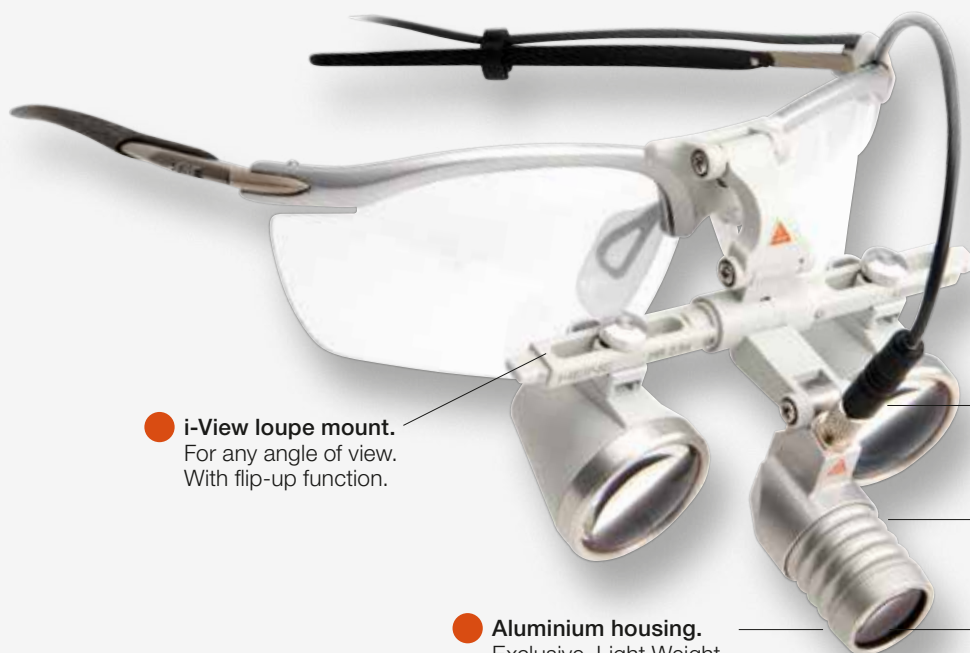
## Experience HEINE® LoupeLight 2

Brighter. Lighter. Improved functionality.

**MOST TRUSTED BY DENTISTS AND ENT SPECIALISTS**

**LED<sup>HQ</sup>**  
LED NOW IN HEINE QUALITY.

**NEW!**



● **i-View loupe mount.**  
For any angle of view.  
With flip-up function.

● **Aluminium housing.**  
Exclusive. Light Weight.  
Durable.



**NEW! mPack mini.**  
Smaller. Lighter.  
USB charging. 9 hours  
operating time.

**NEW! Replaceable high  
quality connecting cord** with  
a splashproof threaded  
connector.

● **Shadow free.**  
Through a compact  
coaxial design.

**Unique HEINE LED<sup>HQ</sup>**  
**NEW! 55,000 Lux.** Homogenous.  
True colour rendering.

> For ordering information, please see the last page or visit [www.heine.com](http://www.heine.com)

## HEINE® MicroLight 2

Ultralight. Universal. Without magnification.



MicroLight2  
on S-FRAME



MicroLight2 on  
Lightweight Headband

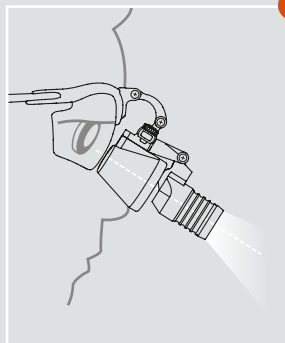




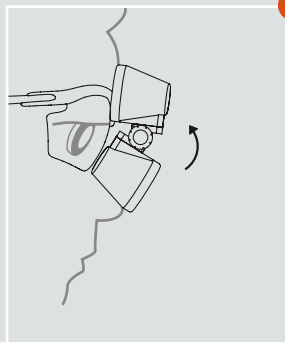
## Experience HEINE® Binocular Loupes

High resolution. Crisp image.  
Various magnifications.

- Your optimal loupe is as individual as your work. HEINE's HIGH TECH optics offer a large variety of loupes to fulfill your individual needs (see page 6).
- Experience the difference of getting less tired – even during long procedures through
  - Crisp, high-resolution image
  - Large field of view
  - Homogenous magnification
  - Lightweight
  - Multi-coated, achromatic technology (HR) or
  - Prismatic for high resolution (HRP)



- **Unique HEINE i-View Loupe Mount**  
Adjustable viewing angle ensures a coaxial, shadow-free image.



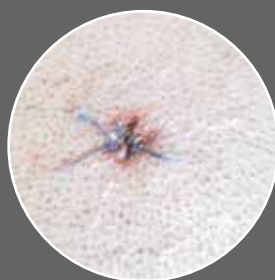
- **Flip-up function.**  
Ability to flip optics up for unmagnified views and overview.

### OPTIMAL MAGNIFICATION

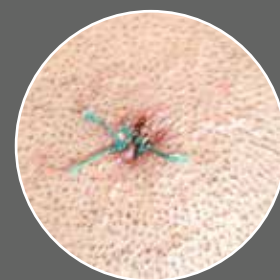
EXPERIENCE THE DIFFERENCE: THE PERFECT COMBINATION OF OPTIMAL MAGNIFICATION ...



Without light and  
without magnification



With a comparable  
competitor product  
(with illumination and  
with magnification)



● With HEINE 2.5x  
Binocular Loupes  
and LoupeLight 2

**LED HO**  
LED NOW IN HEINE QUALITY.

# Experience unique HEINE LED<sup>HQ</sup>

Bright. Homogenous. True colour rendering.

- LED is not just LED. Experience five important differences of HEINE LED<sup>HQ</sup> quality for perfect illumination during your daily work.



## OPTIMUM BRIGHTNESS

55,000 – 65,000 Lux, the proven optimum for our Loupelights and Headlights, will allow you to discern even slightest abnormalities.



## EDGE TO EDGE HOMOGENEITY

A coaxial, absolutely bright and uniform light spot.

CRI  
90

## TRUE COLOUR RENDERING

Comparable with daylight, indicated by a Colour Rendering Index (CRI) of 90: Red is red and blue is blue.



## IDEAL TEMPERATURE MANAGEMENT

The compact, ergonomic design with a heat-conducting foil and an aluminium heat sink ensures optimal LED performance and life time.

LONG  
LIFE

## UNLIMITED WORKING LIFE

The Integrated HEINE LEDs<sup>HQ</sup> in HEINE Head- and Loupelights have virtually unlimited working life and are maintenance-free.

LED<sup>HQ</sup>

LED NOW IN HEINE QUALITY.

**PERFECT ILLUMINATION**



... AND BRIGHT AND HOMOGENOUS ILLUMINATION AND TRUE COLOUR RENDERING



Without light and  
without magnification



With a comparable  
competitor product  
(with illumination and  
with magnification)



With HEINE 2.5x  
Binocular Loupes  
and LoupeLight 2

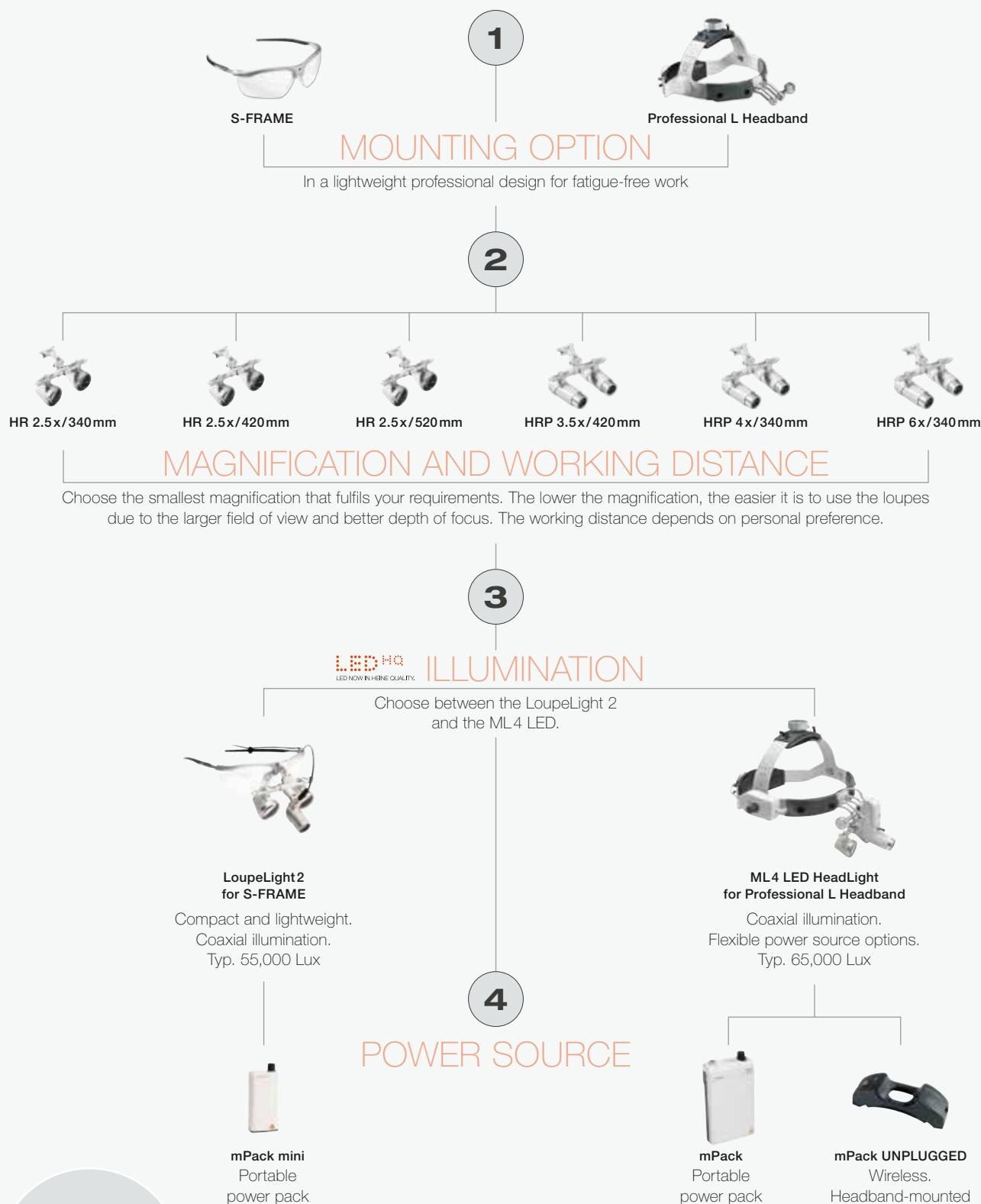
LED<sup>HQ</sup>

LED NOW IN HEINE QUALITY.

# Experience your perfect combination

**NEW!**

In only 4 steps. Choose your perfect configuration.



For more  
information,  
please  
contact us!

# Experience true individuality

Ordering information.

**PERFECT VIEW**

**ML4 LED HeadLight**  
on Headband  
Professional L with  
HR Binocular Loupes  
and S-GUARD

**J-008.31.441**

**NEW!**  
**MicroLight 2**  
on lightweight  
headband

**J-008.31.277**

**ML4 LED HeadLight**  
on Headband  
Professional L

**J-008.31.416**

**NEW!**  
**LoupeLight 2**  
on S-FRAME  
with HR Binocular  
Loupes

**C-008.32.451**

**NEW!**  
**LoupeLight 2**  
on S-FRAME  
with HRP  
Binocular Loupes

**C-008.32.453**



## Our most trusted sets:

### LOUPES AND LIGHTS

**ML4 LED HeadLight with HR/HRP Binocular Loupes** with i-View loupe mount and S-GUARD on Headband Professional L, mPack and plug-in transformer, cleaning fluid

with HR Binocular Loupe 2.5x / 420mm working distance

**J-008.31.441**

with HRP Binocular Loupe 3.5x / 420mm working distance

**J-008.31.442**

**NEW! LED LoupeLight 2 with HR/HRP Binocular Loupes** with i-View loupe mount on S-FRAME, detachable yellow filter, mPack mini, mPack mini Belt Clip, E4-USB plug-in transformer, protective lenses, 2 sterilisable levers, retaining cord, cleaning fluid in case

with HR Binocular Loupe 2.5x / 420mm working distance

**C-008.32.451**

with HRP Binocular Loupe 3.5x / 420mm working distance

**C-008.32.453**

### LIGHTS ONLY

**ML4 LED HeadLight on Headband Professional L** with Wall Transformer EN50 UNPLUGGED, 2x mPack UNPLUGGED

**J-008.31.416**

**NEW! MicroLight 2 on lightweight headband** with mPack mini, mPack mini Belt Clip, E4-USB plug-in transformer, retaining cord and cleaning fluid, in case

**J-008.31.277**

### LOUPES ONLY

**Binocular Loupes Sets** with i-View on S-FRAME, Protective lenses, 2 sterilisable swivel levers, retaining cord, cleaning fluid, cleaning cloth, carrying case

with HR Binocular Loupe 2.5x / 420mm working distance

**C-000.32.356**

with HRP Binocular Loupe 4x / 340mm working distance

**C-000.32.431**

**NEW!**

Find your individual combination with all the various loupes options on  
[www.heine.com/binocular\\_loupes\\_headlights](http://www.heine.com/binocular_loupes_headlights)



In 1946 our founder, Helmut A. Heine started HEINE Optotechnik with one goal in mind; to build the highest quality diagnostic instruments available in the world. It was his belief that the highest quality instruments will always best support the health care professional in making the earliest and most accurate diagnosis. For over 70 years, our customers have been able to rely on this promise, and on their HEINE instruments for precise diagnostic performance, unique functionality and long lasting durability.

Today, as a global leader in primary diagnostic instruments with over 500 employees we remain committed to our founding principles. We are still a 100 % family owned and managed company and care deeply about our employees, our customers, and the quality of our products. We continue to develop and manufacture HEINE instruments exclusively at our facilities in Germany, where we combine decades-long experience and craftsmanship with the most modern manufacturing technologies.

[www.heine.com](http://www.heine.com)



GERMANY

 HEINE Optotechnik GmbH & Co. KG  
Kientalstr. 7  
82211 Herrsching  
Tel. +49 (0) 81 52-38 0  
Fax +49 (0) 81 52-3 82 02  
E-Mail: [info@heine.com](mailto:info@heine.com)  
[www.heine.com](http://www.heine.com)

NORTH AMERICA

HEINE USA LTD.  
10 Innovation Way  
Dover, NH 03820  
Tel. (603) 7 42-71 03  
Fax (603) 7 42-72 17  
Toll Free (800) 367-4872  
E-Mail: [service@heine-na.com](mailto:service@heine-na.com)

AUSTRALIA

HEINE AUSTRALIA PTY. LTD.  
Unit 9, 98 Old Pittwater Road  
PO Box 7218 Warringah Mall  
NSW 2100  
Tel. +61 (0) 2-99 38 95 00  
Fax +61 (0) 2-99 39 23 05  
E-Mail: [info@heine.com.au](mailto:info@heine.com.au)

SWITZERLAND

HEINE (Schweiz) AG  
Tobelackerstr. 9  
CH-8212 Neuhausen am Rheinfl  
Tel. +41 (0) 52-6 72 22 66  
Fax +41 (0) 52-6 72 63 77  
E-Mail: [info@heineschweiz.ch](mailto:info@heineschweiz.ch)

We reserve the right to change specification without notice.  
© 2017 HEINE Optotechnik GmbH & Co. KG. All rights reserved.

Your distributor

07/17. A-000.00.257 e

**“You can  
only treat  
what you  
see!”**

**Dr. Erik Vetter**  
(MSc Master of Science Implantology,  
Diplomate ICOI Implantology,  
Periodontology, Aesthetic Dentistry)  
testing HEINE HRP Loupes.

